

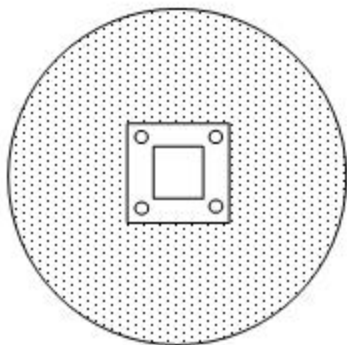
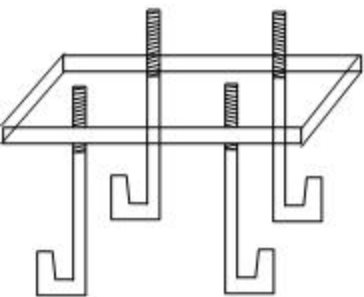
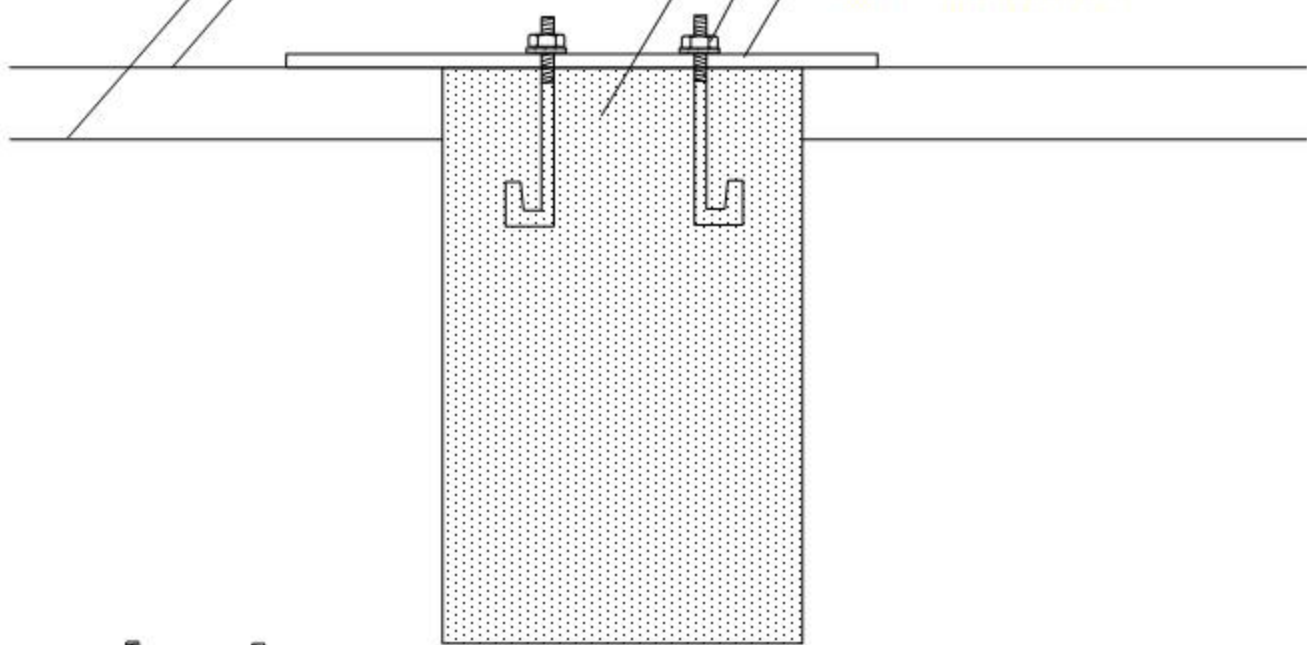
Sub grading of court or driveway

Finish grading of court or driveway

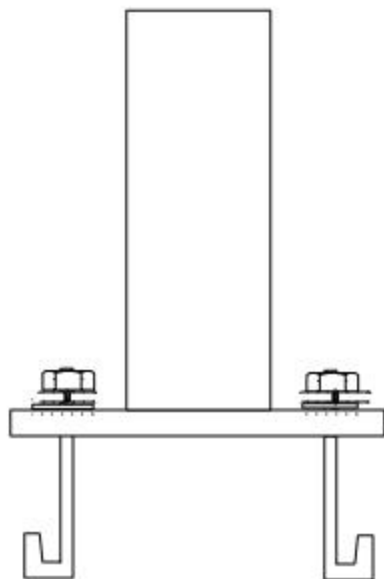
2' 6" wide x 4' 0" deep concrete footing minimum 2,000 lb mix

4- 1/2" x 16" anchor bolts spaced at each corner with nuts, washers and lock washers

Polycarbonate bolt template



TOP VIEW



Parts list needed



1 pc polycarbonate template



4 pcs 1/2" x 16" anchor bolts



4 hex jam nuts



4 spring lock washers



4 regular washers